



# GAT MONTHLY MEMBERSHIP PROGRESS REPORT

Results as of: 11/30/2021

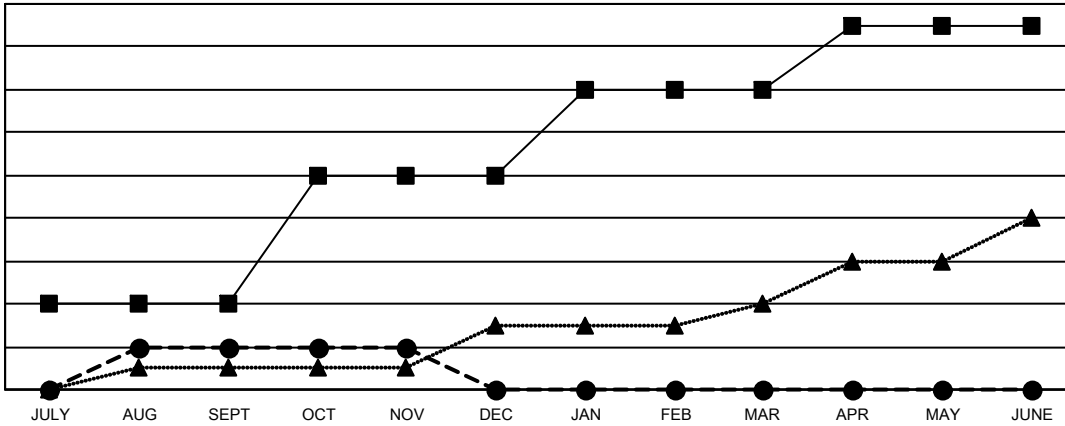
Multiple District 35

LOCATION: FLORIDA

Clubs			
RESULTS FOR 2021-2022			
QUARTER	NEW CLUB GOAL	NEW CLUBS	DROPPED CLUBS
JULY/AUG/SEPT	4	2	3
OCT/NOV/DEC	6	0	0
JAN/FEB/MAR	4	0	0
APR/MAY/JUNE	3	0	0

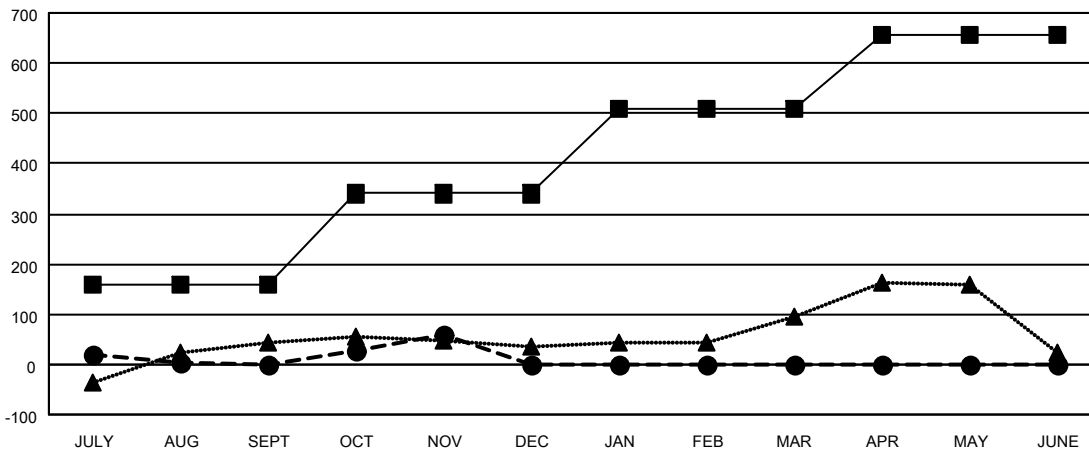
Members			
RESULTS FOR 2021-2022			
QUARTER	MEMBER GROWTH NET GOAL	MEMBER GROWTH ACTUAL	DROPPED MEMBERS ACTUAL (including transfers)
JULY/AUG/SEPT	160	272	229
OCT/NOV/DEC	180	151	77
JAN/FEB/MAR	170	0	0
APR/MAY/JUNE	145	0	0

GOALS AND ACTUAL NEW CLUBS CUMULATIVE



- CURRENT YEAR GOALS FOR NEW CLUBS
- CURRENT YEAR ACTUAL NEW CLUBS
- ▲- LAST YEAR ACTUAL NEW CLUBS

GOALS AND ACTUAL MEMBERS CUMULATIVE



- MEMBER GROWTH NET GOAL
- MEMBER GROWTH ACTUAL
- ▲- LAST YEAR MEMBERSHIP ACTUAL

<b>DROPPED CLUBS: 3</b>	
<b>DROPPED MEMBERS</b>	
DECEASED	34
CLUB CANCELLED	35
OTHER	237
<b>TOTAL</b>	<b>306</b>

96 CLUBS OF 219 ADDED 1 OR MORE NEW MEMBERS

[CLICK HERE FOR CUMULATIVE MEMBERSHIP DATA](#)

GENDER DISTRIBUTION	
MALE	2,688 (53.60%)
FEMALE	2,327 (46.40%)
NON BINARY	0 (0.00%)
PREFER NOT TO ANSWER	0 (0.00%)
<b>TOTAL FAMILY UNIT MEMBERS</b>	<b>1,166</b>
<b>FAMILY MEMBERS PAYING HALF DUES</b>	<b>598</b>